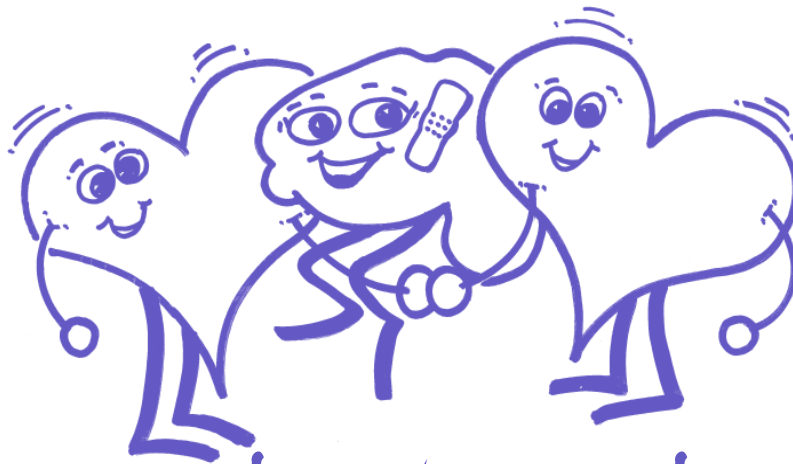


# Meet & Greet / Farm Visit



## Families4Families

Acquired Brain Injury Support Network

**10.00 am - 12 noon Monday 4 March 2013**

@ Pinetree Cottage Farm, 1803 Hindmarsh Tiers  
(Valley) Rd, Myponga (home of Michael & Jen Farnden).

Join us for this first session of a regular monthly group being held usually at Sellicks Community Hall to hear about our Network, enjoy meeting other families and to enjoy a lovely morning tea and farm tour!

Established BY people  
with ABI, their family &  
supporters.

Established to help US  
help OURSELVES.

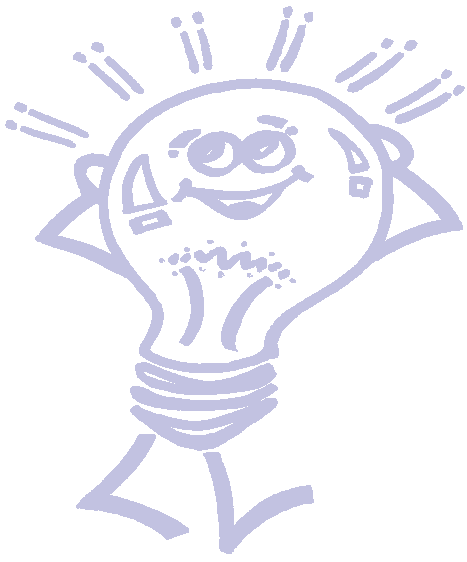
### What is the Network?

A NEW peer based support network for people impacted by ABI, their families and friends.

We offer Social activities, Information sessions on issues related to living with ABI or supporting someone with ABI, Web based resources and group discussions along with special events and information sharing.

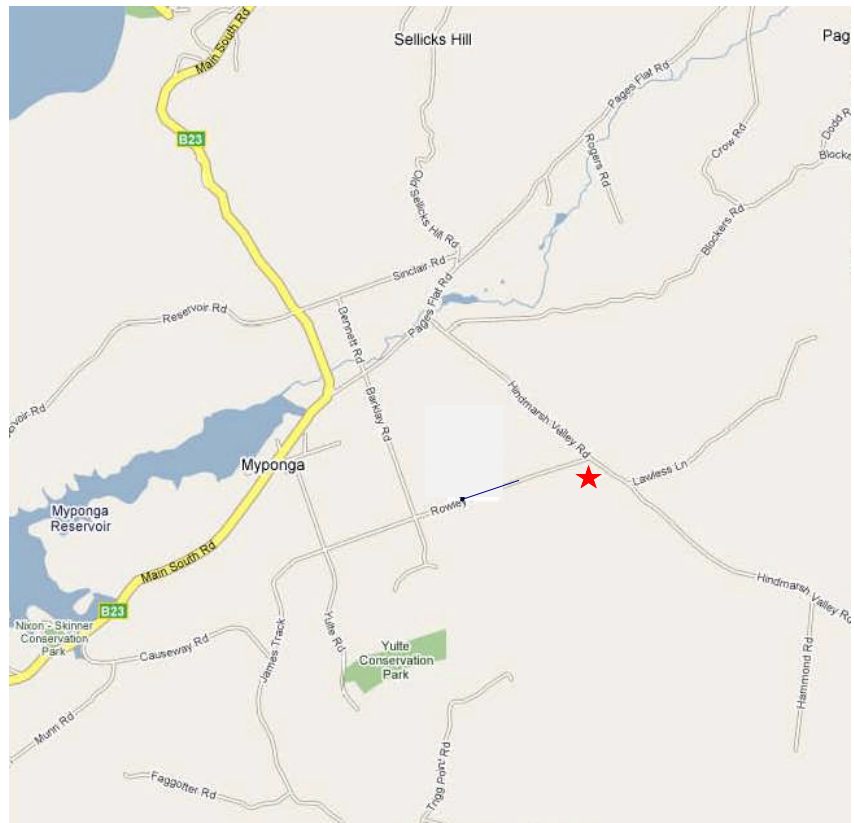
**0433 388 250**

**WEBSITE <http://families4families.org.au>**



# Getting to the Event

Parking is available on the farm paddock, gravel driveway and walkways are on site along with disabled access bathroom facilities.



There is no need to RSVP unless we can help you attend!

If you are someone impacted by ABI or a family member, friend or supporter of someone with ABI, we would like to assist you to make your attendance at our event not only possible but easy for you to arrange. Therefore, please call or email to let us know if:

- ◆ You require transportation assistance to attend the session; or
- ◆ You have special dietary needs for the morning tea; or
- ◆ You would like more information about the network before you decide to attend.

## Families4Families

Acquired Brain Injury Support Network

Join us @ Pinetree Cottage Farm, 1803 Hindmarsh Tiers Rd, Myponga (*home of Michael and Jen Farnden*).