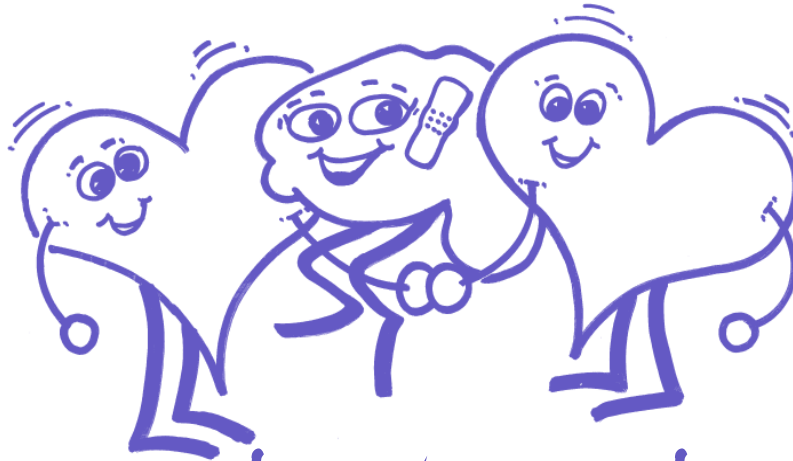


Meet & Greet



Families4Families

Acquired Brain Injury Support Network

2.00 pm - 4.00 pm Thursday 4 April 2013

**@ OT Kitchen/Meeting Room, Port Lincoln Hospital,
Oxford Terrace, Port Lincoln.**

Join us for this first session of a regular group being held at this time and location. Hear about our Network, enjoy meeting other people with ABI and their families, and (of course) sharing afternoon tea!

*Established BY people
with ABI, their family &
supporters.*

*Established to help US
help OURSELVES.*

What is the Network?

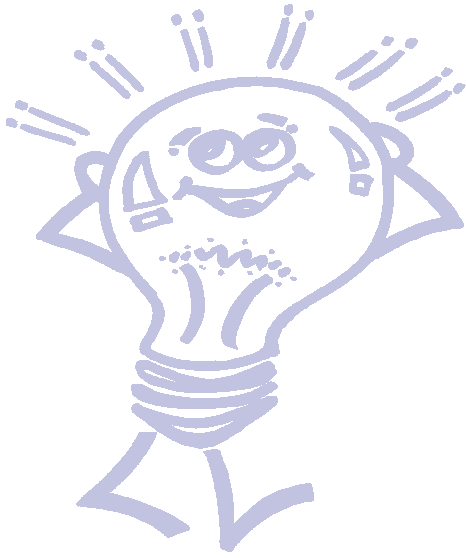
A NEW peer based support network for people impacted by ABI, their families and friends.

We offer Social activities, Information sessions on issues related to living with ABI or supporting someone with ABI, Web based resources and group discussions along with special events and information sharing.

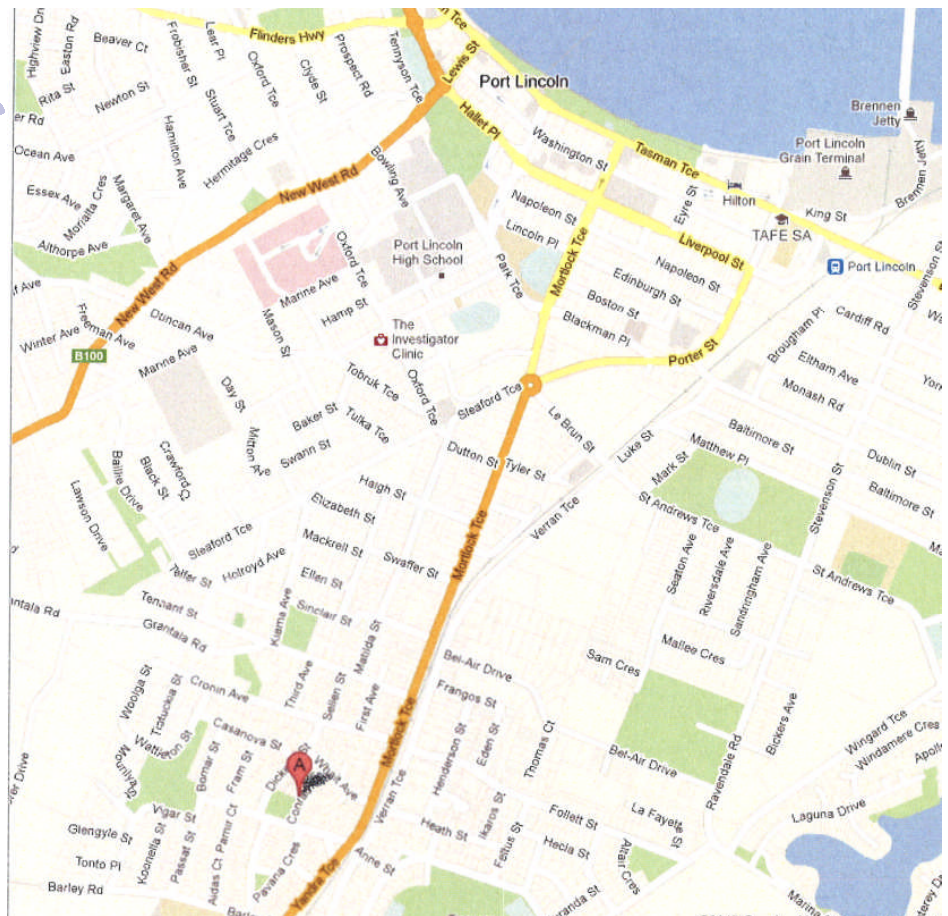
0433 388 250

WEBSITE <http://families4families.org.au>

Getting to the Event



Parking is available nearby and limited disabled car parking on site.



There is no need to RSVP unless we can help you attend!

If you are someone impacted by ABI or a family member, friend or supporter of someone with ABI, we would like to assist you to make your attendance at our event not only possible but easy for you to arrange. Therefore, please call or email to let us know if:

- ◆ You require transportation assistance to attend the session; or
- ◆ You have special dietary needs for the morning tea; or
- ◆ You would like more information about the network before you decide to attend.

Families4Families

Acquired Brain Injury Support Network

Join us @ OT Kitchen/Meeting Room,
Port Lincoln Hospital, Oxford Terrace, Port Lincoln.